




# VISION

STRUCTURAL FIREFIGHTING GLOVES


CERTIFIED TO NFPA 1970-2025




**WATER & FLAME RESISTANT**  
Water buffalo hide exterior keeps hands dry and safe



**GLOWS IN THE DARK**  
RIT Rescue Bands support downed firefighter rescue and high-vis need situations



**REINFORCED KNUCKLE GUARD**  
8 layers featuring 100% Kevlar® fused with silicon carbide



**PORELLE® DXT PRO MOISTURE BARRIER**  
Certified\* to protect against chemical and viral threats

## WHEN SECONDS MATTER, PRO-TECH 8 VISION GLOVES ARE THERE FOR YOU

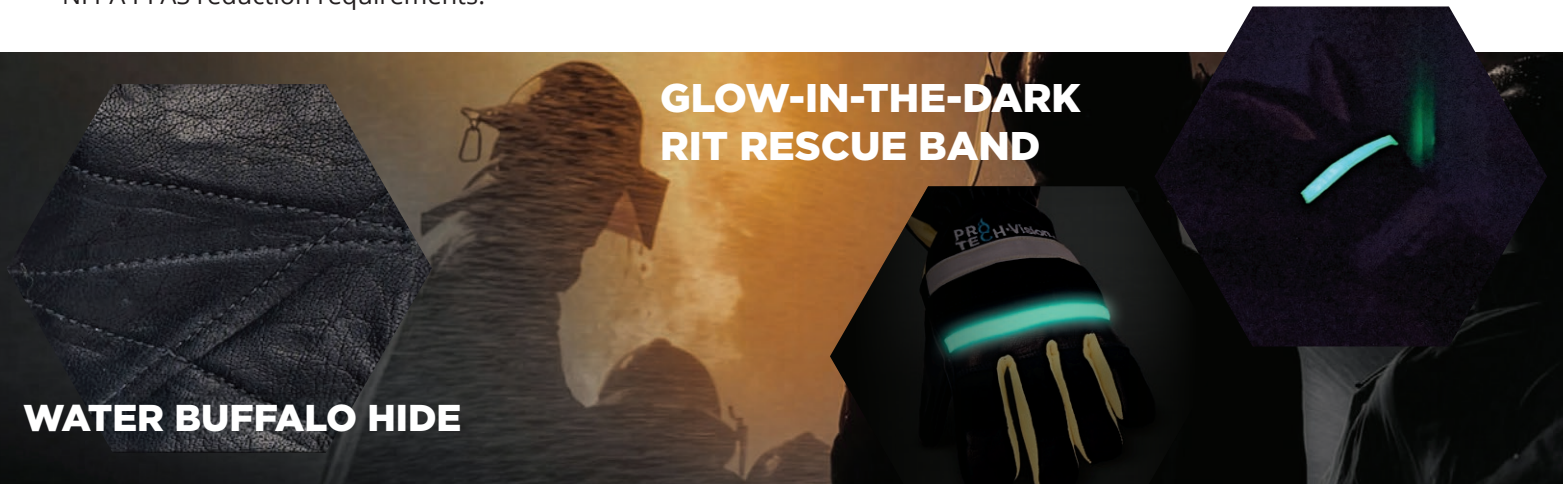
Our glow-in-the-dark bands absorb light and clearly identify your location in all low-light to no-light conditions for hours. The reinforced eight-layer knuckle guard, water-resistant outer shell made of water buffalo hide and certified Porelle® DXT PRO moisture barrier, to protect against chemical and viral threats, make this your go to glove in any situation. The Vision Glove meets and exceeds NFPA PFAS reduction requirements.



\*NFPA 1970-2025 and EN 659

## GLOW-IN-THE-DARK RIT RESCUE BAND

WATER BUFFALO HIDE





## VISION FEATURES

- SUPERIOR WET-AND-DRY GRIP**  
 Water buffalo hide and stitched down palm and fingers delivers exceptional grip
- ENHANCED DEXTERITY**  
 Finger sidewalls feature Kevlar® and Nomex®
- EASY DON AND DOFF**  
 Using modacrylic inner liner and durable leather pull tab
- RESISTS PULLOUT**  
 Inner liner is sewn and bonded at each fingertip for maximum resistance to pullout
- NFPA 1970-2025 CERTIFIED**  
 Materials certified to NFPA 1970-2025 for Professional-Grade Hazard Protection

## SIZING CHART

NFPA 1970-2025 sizing ranges from 64-82 in both N (narrow) and W (wide) varieties. A measuring guide can be found on our website [www.protech8.com](http://www.protech8.com). Please reference the chart below for the equivalent alpha sizes from previous Pro-Tech 8 models\*\*.

64N	70N	70W	76N	76W	82N	82W	82XW
XS	S	M	M/L	L/XL	XL	XXL	XXXL

## MODEL NUMBER: PT-8 VSC - AVAILABLE IN SHORT CUFF AND CADET SIZES

\*\*These are a rough estimation; the best way to determine your size is to use the steps laid out in the standard.

## PROPRIETARY 8-LAYER KNUCKLE-GUARD TECHNOLOGY™

The most vulnerable area on a firefighter's hand is the knuckle. Pro-Tech 8's unique multi-layer knuckle guard system provides unmatched thermal protection and cut/puncture resistance.



**1 - KEVLAR® / NOMEX®**  
 Para-aramid Synthetic Fiber



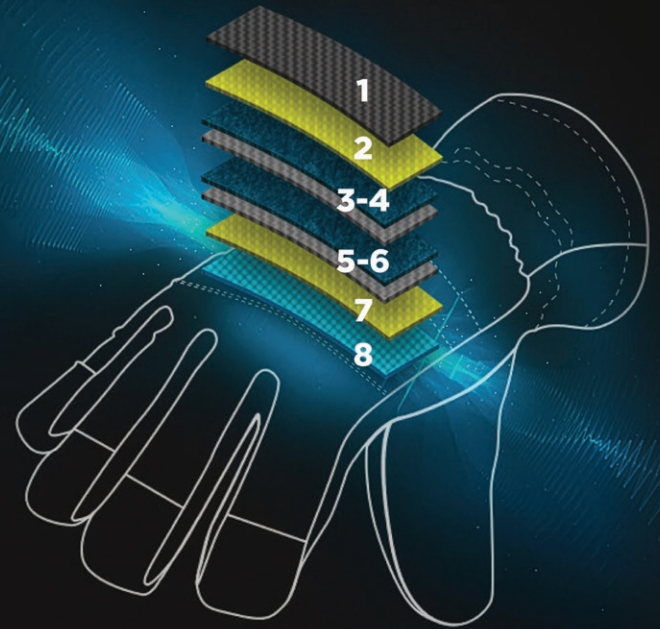
**2 / 7 - MODACRYLIC**  
 Flame-Resistant Meta-aramid Modacrylic Material



**3-4 / 5-6 - SILICON CARBIDE / KEVLAR**  
 A Compound of Silicon and Carbon Used as an Abrasive Layered with Kevlar



**9 - MODACRYLIC INNER LINER**  
 Flame-Resistant Meta-aramid Modacrylic Material



[WWW.PROTECH8.COM](http://WWW.PROTECH8.COM) - [INFO@PROTECH8.COM](mailto:INFO@PROTECH8.COM)



Disclaimer: User is responsible for assessing suitability of product for specific use. Pro-Tech 8 Structural Gloves are heat and flame RESISTANT, not PROOF. Pro-Tech 8 Structural Gloves are cut and puncture RESISTANT, not PROOF. Please see instructions for use and warnings on our website for more details. Materials and features may vary. Kevlar® and Nomex® are registered trademarks of Arclon Holdings.

PTG-7 Rev 2 April 2026